



CHURCHILL®



Stonecast®

Collections



Stonecast[®]

Stonecast is an exciting collection of hand decorated products from Churchill, designed in different styles to suit all manner of hospitality environments. Inspired by the changing seasons and fresh ingredients, original Stonecast is available in ten stunning colours. The Stonecast Patina range is inspired by tones and surface texture created naturally over time, shaped on organic materials such as metal, stone, leather and wood. A simple touch of rustic colour comes from Stonecast Hints with it's fine speckle and stippled edge band. Two colour Stonecast Aqueous is inspired by the fluidity of water and emulates a liquid pooling effect. The nature of the manufacturing process means that every piece of stonecast will be slightly different, adding to the overall charm of the product.



Visit our YouTube channel [Churchill1795](#) to watch our official Stonecast video.

CHURCHILL[®] super vitrified



Inspired by *the seasons*

Seasonal inspiration is behind the ten rich, hand applied colours of Stonecast, from the fresh palettes of spring and summer to the warmth of autumnal hues and the cool tones of winter. Stonecast provides the perfect canvas to present fresh, seasonal ingredients. Hand decorated with a coloured spinwash, fine speckle and rustic edge band, each piece of Stonecast is a unique creation.



Creative Colour *Combinations*



The Stonecast colours can be mixed and combined with other ranges in the Churchill portfolio to create striking and individual looks. Stonecast colours blend with ranges in Studio Prints such as Raku, Stone or Fluid to form a unique tabletop palette that complement all varieties of interior design.





Stonecast[®]

Hints

Hints is an exciting collection from Stonecast, inspired by those who want the rustic Stonecast look but with a hint of colour. Stonecast Hints is hand decorated with a fine coloured speckle, the same speckle colour is hand applied to the edge to create a stippled band, achieving a rustic finish. The nature of the manufacturing process means that every piece will be slightly different, adding to the overall charm of the product.



Add a hint *of colour*



A simple rustic style which is versatile in use and ideal for casual dining settings. Items feature a hand applied stipple edge band and fine speckle. Stonecast Hints offers the perfect way to add a subtle touch of colour to large presentation pieces for buffet, canapes or pizza presentation.





Stonecast[®]

Aqueous

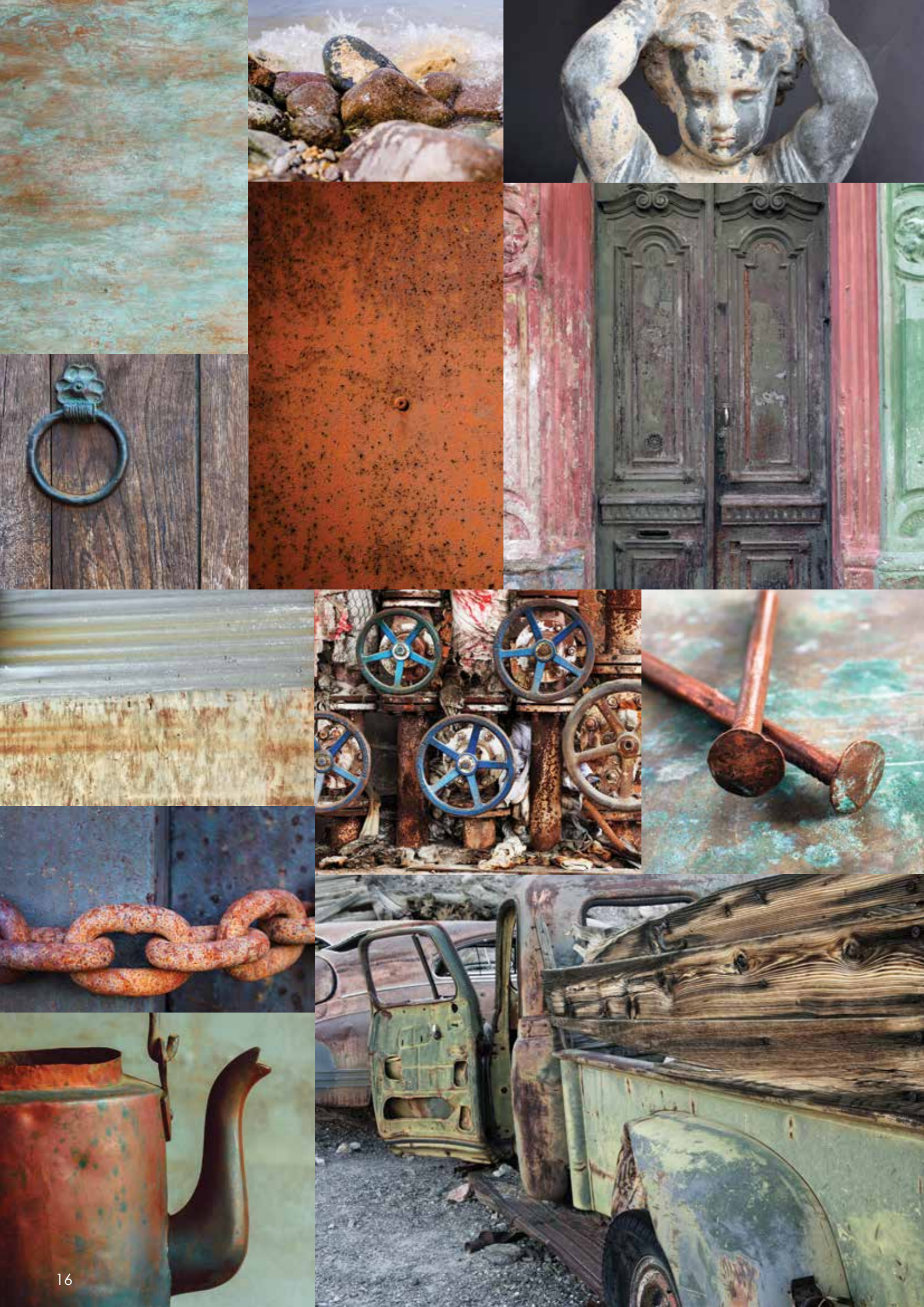
Stonecast Aqueous is inspired by the fluidity of water, the hand finished, premium design emulates a liquid pooling effect. The nature of the manufacturing process means that every piece will be unique, adding to the overall charm of the product.



Liquid *Pooling Effect*

Contemporary Stonecast Aqueous in the Bayou colour combination is reminiscent of the tones found in natural bodies of water. The hand finished design creates impact and enhances food presentation in a variety of settings. Manufactured in the UK, Stonecast Aqueous is designed to withstand the rigours of the hospitality environment.





Stonecast®

Patina

Stonecast Patina is inspired by tones and surface texture created naturally over time, shaped on organic materials such as metal, stone, leather and wood. The earthy, reactive tones are hand decorated in the UK, making each piece unique and individual.



Inspired by *surface texture*

In a range of stunning items, Stonecast Patina allows you to be individual. Sophisticated Burnished Green, Antique Taupe, Iron Black, Vintage Copper, Rustic Teal and Cobalt Blue provide the perfect base for a wide range of fresh and creative food presentation.



Product Solutions

BLUEBERRY	22 - 23
SAMPHIRE GREEN	24 - 25
BARLEY WHITE	26 - 31
HINTS BARLEY WHITE	30 - 31
DUCK EGG BLUE	32 - 35
PEPPERCORN GREY	36 - 39
NUTMEG CREAM	40 - 41
CORNFLOWER BLUE	42 - 43
SPICED ORANGE	44 - 45
MUSTARD SEED YELLOW	46 - 47
BERRY RED	48 - 49
HINTS INDIGO BLUE	50 - 51
AQUEOUS BAYOU	52 - 53
PATINA COLBALT BLUE	54 - 55
PATINA RUSTIC TEAL	56 - 57
PATINA BURNISHED GREEN	58 - 59
PATINA ANTIQUE TAUPE	60 - 61
PATINA IRON BLACK	62 - 63
PATINA VINTAGE COPPER	64 - 65



Blueberry

Code: SBBS



COUPE PLATE
SBBSEV111 28.8cm 11¼"
 CTN QTY 12
SBBSEV101 26cm 10¼"
 CTN QTY 12



COUPE PLATE
SBBSEVP81 21.7cm 8½"
 CTN QTY 12



COUPE PLATE
SBBSEVP61 16.5cm 6½"
 CTN QTY 12



COUPE BOWL
SBBSEVB91 24.8cm 9¾"
 113.6cl 40oz
 CTN QTY 12
SBBSEVB71 18.2cm 7¼"
 42.6cl 15oz
 CTN QTY 12



TRIANGLE PLATE
SBBSTR121 31.1cm 12¼"
 CTN QTY 6
SBBSTR101 26.5cm 10½"
 CTN QTY 12



TRIANGLE PLATE
SBBSTR91 22.9cm 9"
 CTN QTY 12
SBBSTR71 19.2cm 7¾"
 CTN QTY 12



TRIANGLE BOWL
SBBSTRB91 23.5cm 9¼"
 60cl 21oz
 CTN QTY 12
SBBSTRB71 18.5cm 7¼"
 37cl 13oz
 CTN QTY 12



TRIANGLE BOWL
SBBSTRB61 15.3cm 6"
 26cl 9oz
 CTN QTY 12



TRIANGLE SHALLOW BOWL
SBBSTB271 27.2 x 26.7cm
 10¾ x 10½"
 CTN QTY 12
SBBSTB231 21 x 21cm
 8¼ x 8¼"
 CTN QTY 12



CHEFS' TRIANGLE PLATE
SBBSTC361 36.5 x 25cm
 14 x 9¾"
 CTN QTY 6



CHEFS' TRIANGLE PLATE
SBBSTC351 35.5 x 18.8cm
 13¾ x 7½"
 CTN QTY 6



CHEFS' TRIANGLE PLATE
SBBSTC301 30.4 x 20.5cm
 12 x 8"
 CTN QTY 6



CHEFS' TRIANGLE PLATE
SBBSTC261 26.5 x 20.5cm
 10½ x 8"
 CTN QTY 12



CHEFS' OBLONG PLATE No.9
SBBSP141 35.5 x 24.5cm
 13¾ x 9¾"
 CTN QTY 6



CHEFS' OBLONG PLATE No.8
SBBSOBL41 30 x 19.9cm
 12 x 7¾"
 CTN QTY 6



CHEFS' OBLONG PLATE No.4
SBBSXO141 35.5 x 18.9cm
 13¾ x 7¾"
 CTN QTY 6



CHEFS' OBLONG PLATE No.3
SBBSXO141 29.8 x 15.3cm
 11¾ x 6"
 CTN QTY 12



CHEFS' OBLONG PLATE No.2
SBBSXO141 29.9 x 12.7cm
 10½ x 5"
 CTN QTY 12

NEW ADDITIONS



Samphire Green

Code: SSGS

NEW ADDITIONS



COUPE PLATE
SSGSEV111 28.8cm 11½"
CTN QTY 12



COUPE PLATE
SSGSEV101 26cm 10¼"
CTN QTY 12



COUPE PLATE
SSGSEVP81 21.7cm 8½"
CTN QTY 12



COUPE PLATE
SSGSEVP61 16.5cm 6½"
CTN QTY 12



COUPE BOWL
SSGSEVB91 24.8cm 9¾"
113.6cl 40oz
CTN QTY 12



COUPE BOWL
SSGSEVB71 18.2cm 7¼"
42.6cl 15oz
CTN QTY 12



TRIANGLE PLATE
SSGSTR121 31.1cm 12¼"
CTN QTY 6
SSGSTR101 26.5cm 10½"
CTN QTY 12



TRIANGLE PLATE
SSGSTR91 22.9cm 9"
CTN QTY 12
SSGSTR71 19.2cm 7¾"
CTN QTY 12



TRIANGLE BOWL
SSGSTRB91 23.5cm 9¼"
60cl 21oz
CTN QTY 12
SSGSTRB71 18.5cm 7¼"
37cl 13oz
CTN QTY 12



TRIANGLE BOWL
SSGSTRB61 15.3cm 6"
26cl 9oz
CTN QTY 12

NEW



CHEFS' TRIANGLE PLATE
SSGSTC351 35.5 x 18.8cm
13¾ x 7¾"
CTN QTY 6

NEW



CHEFS' TRIANGLE PLATE
SSGSTC301 30.4 x 20.5cm
12 x 8"
CTN QTY 6

NEW



CHEFS' TRIANGLE PLATE
SSGSTC261 26.5 x 20.5cm
10½ x 8"
CTN QTY 12

NEW



CHEFS' OBLONG PLATE No.9
SSGSXP141 35.5 x 24.5cm
13¾ x 9¾"
CTN QTY 6

NEW



CHEFS' OBLONG PLATE No.8
SSGSOBL41 30 x 19.9cm
12 x 7¾"
CTN QTY 6



CHEFS' OBLONG PLATE No.4
SSGSXO141 35.5 x 18.9cm
13¾ x 7¾"
CTN QTY 6

NEW



CHEFS' OBLONG PLATE No.3
SSGSXO111 29.8 x 15.3cm
11¾ x 6"
CTN QTY 12

NEW



CHEFS' OBLONG PLATE No.2
SSGSXO101 29.9 x 12.7cm
10½ x 5"
CTN QTY 12



Barley White

Code: SWHS



COUPE PLATE
SWHSEV121 32.4cm 12 3/4"
 CTN QTY 6
SWHSEV111 28.8cm 11 1/4"
 CTN QTY 12
SWHSEV101 26cm 10 1/4"
 CTN QTY 12



COUPE PLATE
SWHSEVP81 21.7cm 8 1/2"
 CTN QTY 12
SWHSEVP61 16.5cm 6 1/2"
 CTN QTY 12



COUPE BOWL
SWHSPLC21 31cm 12"
 240cl 84.5oz
 CTN QTY 6
SWHSEVB91 24.8cm 9 3/4"
 113.6cl 40oz
 CTN QTY 12
SWHSEVB71 18.2cm 7 1/4"
 42.6cl 15oz
 CTN QTY 12



DEEP COUPE PLATE
SWHSPD271 28.1cm 11"
 H: 3.7cm
 CTN QTY 12
SWHSPD251 25.5cm 10"
 H: 3.5cm
 CTN QTY 12
SWHSPD221 22.5cm 8 3/4"
 H: 2.7cm
 CTN QTY 12



NEW



WALLED CHEFS' PLATE
SWHWP261 26cm 10 1/4"
 H: 2cm
 CTN QTY 6
SWHWP211 21cm 8 1/4"
 H: 2cm
 CTN QTY 6



ORGANIC ROUND PLATE
SWHSOG111 28.6cm 11 1/4"
 CTN QTY 12
SWHSOG101 26.4cm 10 3/4"
 CTN QTY 12
SWHSOG81 21cm 8 1/4"
 CTN QTY 12
SWHSOG71 18.6cm 7 1/4"
 CTN QTY 12



ORGANIC ROUND BOWL
SWHSOGB11 25.3cm 9 3/4"
 110cl 38oz
 CTN QTY 12



WIDE RIM BOWL
SWHSVWBL1 28cm 11"
 46.8cl 16.5oz
 CTN QTY 12
SWHSVWBM1 24cm 9 1/2"
 28.4cl 10oz
 CTN QTY 12



TRIANGLE PLATE
SWHSTR121 31.1cm 12 1/4"
 CTN QTY 6
SWHSTR101 26.5cm 10 1/2"
 CTN QTY 12



TRIANGLE PLATE
SWHSTR91 22.9cm 9"
 CTN QTY 12
SWHSTR71 19.2cm 7 3/4"
 CTN QTY 12



TRIANGLE BOWL
SWHSTRB91 23.5cm 9 1/4"
 60cl 21oz
 CTN QTY 12
SWHSTRB71 18.5cm 7 1/4"
 37cl 13oz
 CTN QTY 12



TRIANGLE BOWL
SWHSTRB61 15.3cm 6"
 26cl 9oz
 CTN QTY 12



TRIANGLE SHALLOW BOWL
SWHSTB271 27.2 x 26.7cm
 10 3/4 x 10 1/2"
 CTN QTY 12
SWHSTB231 21 x 21cm
 8 1/4 x 8 1/4"
 CTN QTY 12



CHEFS' TRIANGLE PLATE
SWHSTC351 35.5 x 18.8cm
 13 3/4 x 7 3/4"
 CTN QTY 6
SWHSTC301 30.4 x 20.5cm
 12 x 8"
 CTN QTY 6



CHEFS' TRIANGLE PLATE
SWHSTC261 26.5 x 20.5cm
 10 1/2 x 8"
 CTN QTY 12



CHEFS' OBLONG PLATTER No.9
SWHXP141 35.5 x 24.5cm
 13 3/4 x 9 3/4"
 CTN QTY 6



CHEFS' OBLONG PLATE No.4
SWHSXO141 35.5 x 18.9cm
 13 3/4 x 7 3/4"
 CTN QTY 6



CHEFS' OBLONG PLATE No.2
SWHSXO101 26.9 x 12.7cm
 10 1/2 x 5"
 CTN QTY 12



CHEFS' OBLONG PLATE No.8
SWHSOBL41 30 x 19.9cm
 12 x 7 3/4"
 CTN QTY 6



CHEFS' OBLONG PLATE No.6
SWHSOBL21 23.7 x 15.7cm
 9 1/2 x 6 1/4"
 CTN QTY 12



OBLONG PLATE
SWHSOP141 35 x 18.5cm
 14 x 7 1/4"
 CTN QTY 6



DEEP SQUARE PLATE
SWHSDS101 26.8cm 10 1/2"
 CTN QTY 6



OVAL COUPE PLATE
SWHSOP71 19.2cm 7 3/4"
 CTN QTY 12



ROUND DISH
SWHSID71 18.5 x 16.8cm
 7 1/2 x 6 3/4"
 CTN QTY 12

CHEFS' OBLONG PLATE No.7
SWHSOBL31 26.1 x 20.2cm
 10 1/4 x 8"
 CTN QTY 12

CHEFS' OBLONG PLATE No.5
SWHSOBL11 15.4 x 12.6cm
 6 x 5"
 CTN QTY 12

SWHSOP111 29.5 x 15cm
 11 3/4 x 6"
 CTN QTY 12

SWHSID61 16 x 14.5cm
 6 1/4 x 5 3/4"
 CTN QTY 12



Covered by Churchill 5 Year Edge Chip Warranty

Barley White

Code: SWHS



HANDLED PADDLE
SWHSPDLH1 28.4cm 11½"
CTN QTY 6



DEEP SKILLET PAN
SWHSPN2 1 24.5cm 9½"
57cl 20oz

CTN QTY 6

SMALL SKILLET PAN

SWHSPN1 1 23cm 9"
37cl 13oz

CTN QTY 6



LIDDED STEW POT
SWHSLSP1 1 14cm 5½"
43cl 15oz

CTN QTY 6

REPLACEMENT LID

SWHSLD1 1
CTN QTY 6



INTERMEDIATE OVAL EARED DISH

SWHSIOEN1 23.2 x 12.5cm
9¼ x 5"
38cl 13.4oz

CTN QTY 6

SWHSSOEN1 20.5 x 11.3cm
8¼ x 4½"
25.5cl 9oz

CTN QTY 6



ROUND EARED DISH

SWHSRENI 17.5 x 21.5cm
7 x 8½"
59cl 20.8oz

CTN QTY 6

SWHSSRENI 15 x 18cm
5¾ x 7¼"
30cl 10.6oz

CTN QTY 6



LASAGNE DISH
SWHSLASN1 16 x 12 x 5cm
6¾ x 4¾ x 2"
60cl 21.1oz

CTN QTY 12



RAMEKIN
SWHSLRKN1 9cm 3½"
19.5cl 6.9oz

CTN QTY 24

SWHSSRKN1 7cm 2¾"
9cl 3.2oz

CTN QTY 24



NOODLE BOWL
SWHSNDBL1 107.5cl 37.8oz
H: 8cm
Dia: 18.3cm

CTN QTY 6



SOUP BOWL
SWHSRBL61 47cl 16oz
H: 6.3cm
Dia: 13.2cm

CTN QTY 12



SNACK BOWL
SWHSBS141 13cm 5½"
40cl 14oz

CTN QTY 12



SHALLOW BOWL
SWHSBSB91 13cm 5½"
26cl 9oz

CTN QTY 12



SHALLOW BOWL
SWHSBSB61 11.6cm 4½"
20cl 7oz

CTN QTY 12



DEEP BOWL
SWHSBDB1 10.2cm 4"
24cl 8.4oz

CTN QTY 12



ZEST BOWL
SWHSZE121 34cl 12oz
H: 6.5cm
Dia: 12.1cm

CTN QTY 12



CHIP MUG
SWHSBSCM1 10cm 3¾"
29cl 11oz

CTN QTY 12



RIPPLE CHIP MUG
SWHSRPCM1 28cl 10oz
H: 9.5cm
Dia: 8.3cm

CTN QTY 12



RIPPLE DIP POT
SWHSRPD21 5.7cl 2oz
H: 5cm
Dia: 5.9cm

CTN QTY 12



DIP POT
SWHSBSD41 8.4cm 3¾"
11cl 4oz

CTN QTY 12

SWHSBSD21 7cm 2¾"
6cl 2oz

CTN QTY 12



SAUCE DISH
SWHSSD3 1 9cl 3oz
H: 4cm
Dia: 8cm

CTN QTY 12



CAPPUCCINO CUP
SWHSCB441 50cl 17.5oz
H: 7cm
Dia: 11.5cm

CTN QTY 6

SWHSCB401 46cl 16oz
H: 7cm
Dia: 11cm

CTN QTY 6



CAPPUCCINO CUP
SWHSCB281 34cl 12oz
H: 6.5cm
Dia: 11cm

CTN QTY 12

SWHSCB201 22.7cl 8oz
H: 5.5cm
Dia: 9.5cm

CTN QTY 12



SAUCER
SWHSCSS 1 15.6cm 6¼"
CTN QTY 12

(Fits SWHSCB441, SWHSCB401, SWHSCB281 & SWHSCB201)



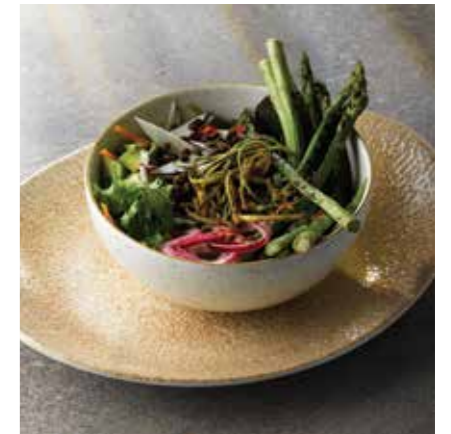
ESPRESSO CUP
SWHSCB91 10cl 3.5oz
H: 5.5cm
Dia: 6.5cm

CTN QTY 12



ESPRESSO SAUCER
SWHSESS 1 11.8cm 4½"
CTN QTY 12

(Fits SWHSCB91)



Barley White

Code: SWHS



MUG
SWHSM121 34cl 12oz
H: 11cm
Dia: 8cm
CTN QTY 12



BEVERAGE POT
SWHSSB301 85.2cl 30oz
H: 15cm

REPLACEMENT LID
SWHRL301
CTN QTY 6



BEVERAGE POT
SWHSSB151 42.6cl 15oz
H: 10.5cm

REPLACEMENT LID
SWHRL151
CTN QTY 6



JUG
SWHSSJ4 1 11.4cl 4oz
H: 7cm
CTN QTY 4



JUG
SWHSSJ2 1 5.6cl 2oz
H: 5cm
CTN QTY 12



SUGAR BOWL
SWHSSGR1 22.7cl 8oz
H: 6.2cm
Dia: 9.8cm
CTN QTY 12



BUD VASE
SWHSSBV 1 12.5cm 5"
CTN QTY 6



SALT
SWHSSSA 1 7cm 2½"
CTN QTY 12
PEPPER
SWHSSPE 1 7cm 2½"
CTN QTY 12

NEW ADDITIONS



Hints Barley White

Code: SHWH



RECTANGULAR BUFFET TRAY
SHWHART 1 30 x 14.5cm
11¾ x 5¾"
CTN QTY 6



SQUARE BUFFET TRAY
SHWHAST 1 30.3 x 30.3cm
11¾ x 11¾"
CTN QTY 4



LARGE COUPE
BUFFET BOWL
SHWHAC141 38.5 x 8.8cm
15¼ x 3½"
500cl 175oz
CTN QTY 4



SQUARE BAKING DISH
SHWHSBD 1 25 x 25 x 6.2cm
10 x 10 x 2½"
2ltr 70.4oz
CTN QTY 6



RECTANGULAR BAKING DISH
SHWHRLBD1 38 x 25 x 6.2cm
15 x 10 x 2½"
3.5ltr 123.2oz
CTN QTY 4



RECTANGULAR BAKING DISH
SHWHXLBD1 53 x 32.5 x 6.2cm
21 x 13 x 2½"
6ltr 211.8oz
CTN QTY 2



RECTANGULAR BAKING DISH
SHWHLBD 1 53 x 16 x 6.2cm
21 x 6½ x 2½"
3ltr 105.6oz
CTN QTY 2



SMALL CASSEROLE DISH
SHWHRC 1 18 x 19.4 x 11.5cm
7 x 6½ x 4½"
2ltr 70.4oz
CTN QTY 4



2/4 FLAT TRAY
SHWHSLBD1 53 x 15 x 2.5cm
21 x 6 x 1"
1.4ltr 50oz
CTN QTY 4

Duck Egg Blue

Code: SDES

NEW ADDITIONS



COUPE PLATE
SDESEV121 32.4cm 12 1/2"
CTN QTY 6



COUPE PLATE
SDESEV111 28.8cm 11 1/4"
CTN QTY 12
SDESEV101 26cm 10 1/4"
CTN QTY 12



COUPE PLATE
SDESEVP81 21.7cm 8 5/8"
CTN QTY 12



COUPE PLATE
SDESEVP61 16.5cm 6 1/2"
CTN QTY 12



COUPE BOWL
SDESPC21 31cm 12"
240cl 84.5oz
CTN QTY 6



COUPE BOWL
SDESEVB91 24.8cm 9 3/4"
113.6cl 40oz
CTN QTY 12
SDESEVB71 18.2cm 7 1/4"
42.6cl 15oz
CTN QTY 12



DEEP COUPE PLATE
SDESPD271 28.1cm 11"
H: 3.7cm
CTN QTY 12



DEEP COUPE PLATE
SDESPD251 25.5cm 10"
H: 3.5cm
CTN QTY 12



DEEP COUPE PLATE
SDESPD221 22.5cm 8 7/8"
H: 2.7cm
CTN QTY 12



WIDE RIM BOWL
SDESVMWBL1 28cm 11"
46.8cl 16.5oz
CTN QTY 12



WIDE RIM BOWL
SDESVMWBM1 24cm 9 1/2"
28.4cl 10oz
CTN QTY 12



ORGANIC ROUND BOWL
SDESOGB11 25.3cm 9 7/8"
110cl 38oz
CTN QTY 12



ORGANIC ROUND PLATE
SDESOG111 28.6cm 11 1/4"
CTN QTY 12



ORGANIC ROUND PLATE
SDESOG101 26.4cm 10 3/8"
CTN QTY 12



ORGANIC ROUND PLATE
SDESOG81 21cm 8 1/4"
CTN QTY 12



ORGANIC ROUND PLATE
SDESOG71 18.6cm 7 1/4"
CTN QTY 12



TRIANGLE PLATE
SDESTR121 31.1cm 12 1/4"
CTN QTY 6
SDESTR101 26.5cm 10 1/2"
CTN QTY 12



TRIANGLE PLATE
SDESTR91 22.9cm 9"
CTN QTY 12
SDESTR71 19.2cm 7 1/2"
CTN QTY 12



TRIANGLE BOWL
SDESTRB91 23.5cm 9 1/4"
60cl 21oz
CTN QTY 12



TRIANGLE BOWL
SDESTRB71 18.5cm 7 1/4"
37cl 13oz
CTN QTY 12



TRIANGLE BOWL
SDESTRB61 15.3cm 6"
26cl 9oz
CTN QTY 12



NEW

CHEFS' TRIANGLE PLATE
SDESTC351 35.5 x 18.8cm
13 3/4 x 7 3/8"
CTN QTY 6



NEW

CHEFS' TRIANGLE PLATE
SDESTC301 30.4 x 20.5cm
12 x 8"
CTN QTY 6



NEW

CHEFS' TRIANGLE PLATE
SDESTC261 26.5 x 20.5cm
10 1/2 x 8"
CTN QTY 12



Duck Egg Blue

Code: SDES



OBLONG PLATE
SDESOP141 35 x 18.5cm
14 x 7 1/4"
CTN QTY 6



OBLONG PLATE
SDESOP111 29.5 x 15cm
11 3/4 x 6"
CTN QTY 12



DEEP SQUARE PLATE
SDESDS101 26.8cm 10 1/2"
CTN QTY 6



OVAL COUPE PLATE
SDESOP71 19.2cm 7 1/4"
CTN QTY 12



NOODLE BOWL
SDESNDL1 107.5cl 37.8oz
H: 8cm
Dia: 18.3cm
CTN QTY 6



SOUP BOWL
SDESRL61 47cl 16oz
H: 6.3cm
Dia: 13.2cm
CTN QTY 12



ZEST BOWL
SDESZE121 34cl 12oz
H: 6.5cm
Dia: 12.1cm
CTN QTY 12



RIPPLE CHIP MUG
SDESRPCM1 28cl 10oz
H: 9.5cm
Dia: 8.3cm
CTN QTY 12



RIPPLE DIP POT
SDESRPD21 5.7cl 2oz
H: 5cm
Dia: 5.9cm
CTN QTY 12



SAUCE DISH
SDESSD31 9cl 3oz
H: 4cm
Dia: 8cm
CTN QTY 12



CAPPUCCINO CUP
SDESCB441 50cl 17.5oz
H: 7cm
Dia: 11.5cm
CTN QTY 6
SDESCB401 46cl 16oz
H: 7cm
Dia: 11cm
CTN QTY 6



CAPPUCCINO CUP
SDESCB281 34cl 12oz
H: 6.5cm
Dia: 11cm
CTN QTY 12
SDESCB201 22.7cl 8oz
H: 5.5cm
Dia: 9.5cm
CTN QTY 12



SAUCER
SDESCSS1 15.6cm 6 1/4"
CTN QTY 12
(Fits SDESCB441, SDESCB401
SDESCB281 & SDESCB201)



ESPRESSO CUP
SDESCEB91 10cl 3.5oz
H: 5.5cm
Dia: 6.5cm
CTN QTY 12



ESPRESSO SAUCER
SDEESS1 11.8cm 4 1/2"
CTN QTY 12
(Fits SDESCEB91)



MUG
SDESVM121 34cl 12oz
H: 11cm
Dia: 8cm
CTN QTY 12



BEVERAGE POT
SDESSB151 42.6cl 15oz
H: 10.5cm
CTN QTY 4
REPLACEMENT LID
SDESRL151
CTN QTY 6



JUG
SDESSJ41 11.4cl 4oz
H: 7cm
CTN QTY 4



SUGAR BOWL
SDESSGR1 22.7cl 8oz
H: 6.2cm
Dia: 9.8cm
CTN QTY 12



BUD VASE
SDESSBV1 12.5cm 5"
CTN QTY 6



SALT
SDESSSA1 7cm 2 1/2"
CTN QTY 12
PEPPER
SDESSPE1 7cm 2 1/2"
CTN QTY 12



Peppercorn Grey

Code: SPGS



COUPE PLATE
SPGSEV121 32.4cm 12¾"
 CTN QTY 6
SPGSEV111 28.8cm 11¼"
 CTN QTY 12
SPGSEV101 26cm 10¼"
 CTN QTY 12



COUPE PLATE
SPGSEVP81 21.7cm 8½"
 CTN QTY 12
SPGSEVP61 16.5cm 6½"
 CTN QTY 12



COUPE BOWL
SPGSPLC21 31cm 12"
 240cl 84.5oz
 CTN QTY 6



COUPE BOWL
SPGSEVB91 24.8cm 9¾"
 113.6cl 40oz
 CTN QTY 12
SPGSEVB71 18.2cm 7¼"
 42.6cl 15oz
 CTN QTY 12



DEEP COUPE PLATE
SPGSPD271 28.1cm 11"
 H: 3.7cm
 CTN QTY 12
SPGSPD251 25.5cm 10"
 H: 3.5cm
 CTN QTY 12
SPGSPD221 22.5cm 8¾"
 H: 2.7cm
 CTN QTY 12

NEW



WALLED CHEFS' PLATE
SPGSWP261 26cm 10¼"
 H: 2cm
 CTN QTY 6
SPGSWP211 21cm 8¼"
 H: 2cm
 CTN QTY 6



ORGANIC ROUND PLATE
SPGSOG111 28.6cm 11¼"
 CTN QTY 12
SPGSOG101 26.4cm 10½"
 CTN QTY 12



ORGANIC ROUND PLATE
SPGSOG81 21cm 8¼"
 CTN QTY 12
SPGSOG71 18.6cm 7¼"
 CTN QTY 12



ORGANIC ROUND BOWL
SPGSOGB11 25.3cm 9¾"
 110cl 38oz
 CTN QTY 12



WIDE RIM BOWL
SPGSVWBL1 28cm 11"
 46.8cl 16.5oz
 CTN QTY 12
SPGSVWBM1 24cm 9½"
 28.4cl 10oz
 CTN QTY 12



TRIANGLE PLATE
SPGSTR121 31.1cm 12¼"
 CTN QTY 6
SPGSTR101 26.5cm 10½"
 CTN QTY 12



TRIANGLE PLATE
SPGSTR91 22.9cm 9"
 CTN QTY 12
SPGSTR71 19.2cm 7½"
 CTN QTY 12



TRIANGLE BOWL
SPGSTRB91 23.5cm 9¼"
 60cl 21oz
 CTN QTY 12
SPGSTRB71 18.5cm 7¼"
 37cl 13oz
 CTN QTY 12
SPGSTRB61 15.3cm 6"
 26cl 9oz
 CTN QTY 12



CHEFS' OBLONG PLATTER No.9
SPGSXP141 35.5 x 24.5cm
 13¾ x 9¾"
 CTN QTY 6



CHEFS' OBLONG PLATE No.4
SPGSXO141 35.5 x 18.9cm
 13¾ x 7¾"
 CTN QTY 6



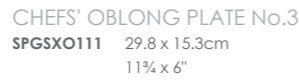
CHEFS' OBLONG PLATE No.2
SPGSXO101 26.9 x 12.7cm
 10½ x 5"
 CTN QTY 12



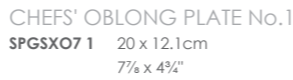
CHEFS' OBLONG PLATE No.8
SPGSOBL41 30 x 19.9cm
 12 x 7¾"
 CTN QTY 6



CHEFS' OBLONG PLATE No.6
SPGSOBL21 23.7 x 15.7cm
 9¼ x 6¼"
 CTN QTY 12



CHEFS' OBLONG PLATE No.3
SPGSXO111 29.8 x 15.3cm
 11¾ x 6"
 CTN QTY 12



CHEFS' OBLONG PLATE No.1
SPGSXO71 20 x 12.1cm
 7¾ x 4¾"
 CTN QTY 12



CHEFS' OBLONG PLATE No.7
SPGSOBL31 26.1 x 20.2cm
 10¼ x 8"
 CTN QTY 12



CHEFS' OBLONG PLATE No.5
SPGSOBL11 15.4 x 12.6cm
 6 x 5"
 CTN QTY 12



OBLONG PLATE
SPGSOP141 35 x 18.5cm
 14 x 7¼"
 CTN QTY 6



OBLONG PLATE
SPGSOP111 29.5 x 15cm
 11¾ x 6"
 CTN QTY 12



DEEP SQUARE PLATE
SPGSDS101 26.8cm 10½"
 CTN QTY 6



OVAL COUPE PLATE
SPGSOP71 19.2cm 7¾"
 CTN QTY 12



ROUND DISH
SPGSID71 18 x 16.8cm
 7¼ x 6¾"
 CTN QTY 12
SPGSID61 16 x 14.5cm
 6¼ x 5¾"
 CTN QTY 12



HANDLED PADDLE
SPGSPDLH1 28.4cm 11¼"
 CTN QTY 6



NEW ADDITIONS

✦ Covered by Churchill 5 Year Edge Chip Warranty

Peppercorn Grey

Code: SPGS



DEEP SKILLET PAN
SPGSPN2 1 24.5cm 9 5/8"
57cl 20oz

CTN QTY 6

SMALL SKILLET PAN
SPGSPN1 1 23cm 9"
37cl 13oz

CTN QTY 6



DEEP BOWL
SPGSBDB1 10.2cm 4"
24cl 8.4oz

CTN QTY 12



SAUCE DISH
SPGSSD3 1 9cl 3oz
H: 4cm
Dia: 8cm

CTN QTY 12



MUG
SPGSSVM121 34cl 12oz
H: 11cm
Dia: 8cm

CTN QTY 12



LIDDED STEW POT
SPGSLSP1 14cm 5 1/2"
43cl 15oz

CTN QTY 6

REPLACEMENT LID
SPGSLD1 1

CTN QTY 6



CHIP MUG
SPGSBSCM1 10cm 3 3/4"
29cl 11oz

CTN QTY 12



CAPPUCCINO CUP
SPGSCB281 34cl 12oz
H: 6.5cm
Dia: 11cm

CTN QTY 12



BEVERAGE POT
SPGSSB301 85.2cl 30oz
H: 15cm

CTN QTY 4

REPLACEMENT LID
SPGSSL301

CTN QTY 6



NOODLE BOWL
SPGSNDBL1 107.5cl 37.8oz
H: 8cm
Dia: 18.3cm

CTN QTY 6



DIP POT
SPGSBSD41 8.4cm 3 3/8"
11cl 4oz

CTN QTY 12

SPGSBSD21 7cm 2 3/4"
6cl 2oz

CTN QTY 12



CAPPUCCINO CUP
SPGSCB201 22.7cl 8oz
H: 5.5cm
Dia: 9.5cm

CTN QTY 12



BEVERAGE POT
SPGSSB151 42.6cl 15oz
H: 10.5cm

CTN QTY 4

REPLACEMENT LID
SPGSSL151

CTN QTY 6



SOUP BOWL
SPGSRBL61 47cl 16oz
H: 6.3cm
Dia: 13.2cm

CTN QTY 12



ZEST BOWL
SPGSZE121 34cl 12oz
H: 6.5cm
Dia: 12.1cm

CTN QTY 12



SAUCER
SPGSCSS 1 15.6cm 6 1/4"
CTN QTY 12

(Fits SPGSCB281 & SPGSCB201)



JUG
SPGSSJ4 1 11.4cl 4oz
H: 7cm

CTN QTY 4



SHALLOW BOWL
SPGSBSB91 13cm 5 1/8"
26cl 9oz

CTN QTY 12

SPGSBSB61 11.6cm 4 5/8"
20cl 7oz

CTN QTY 12



RIPPLE CHIP MUG
SPGSRPCM1 28cl 10oz
H: 9.5cm
Dia: 8.3cm

CTN QTY 12



ESPRESSO CUP
SPGSCEB91 10cl 3.5oz
H: 5.5cm
Dia: 6.5cm

CTN QTY 12



JUG
SPGSSJ2 1 5.6cl 2oz
H: 5cm

CTN QTY 12



SNACK BOWL
SPGSBS141 13cm 5 1/8"
40cl 14oz

CTN QTY 12



RIPPLE DIP POT
SPGSRPD21 5.7cl 2oz
H: 5cm
Dia: 5.9cm

CTN QTY 12



ESPRESSO SAUCER
SPGSESS 1 11.8cm 4 1/2"
CTN QTY 12

(Fits SPGSCEB91)



SUGAR BOWL
SPGSSSR1 22.7cl 8oz
H: 6.2cm
Dia: 9.8cm

CTN QTY 12



Nutmeg Cream

Code: SNMS



COUPE PLATE
SNMSEV121 32.4cm 12¾"
CTN QTY 6



COUPE PLATE
SNMSEV111 28.8cm 11¼"
CTN QTY 12
SNMSEV101 26cm 10¼"
CTN QTY 12



COUPE PLATE
SNMSEVP81 21.7cm 8½"
CTN QTY 12



COUPE PLATE
SNMSEVP61 16.5cm 6½"
CTN QTY 12



COUPE BOWL
SNMSPIC21 31cm 12"
240cl 84.5oz
CTN QTY 6



COUPE BOWL
SNMSEVB91 24.8cm 9¾"
113.6cl 40oz
CTN QTY 12
SNMSEVB71 18.2cm 7¼"
42.6cl 15oz
CTN QTY 12



ORGANIC ROUND PLATE
SNMSOG111 28.6cm 11¼"
CTN QTY 12



ORGANIC ROUND PLATE
SNMSOG101 26.4cm 10½"
CTN QTY 12



ORGANIC ROUND PLATE
SNMSOG81 21cm 8¼"
CTN QTY 12



ORGANIC ROUND PLATE
SNMSOG71 18.6cm 7¼"
CTN QTY 12



ORGANIC ROUND BOWL
SNMSOGB11 25.3cm 9¾"
110cl 38oz
CTN QTY 12



TRIANGLE PLATE
SNMSTR121 31.1cm 12¼"
CTN QTY 6
SNMSTR101 26.5cm 10½"
CTN QTY 12



TRIANGLE PLATE
SNMSTR91 22.9cm 9"
CTN QTY 12



TRIANGLE PLATE
SNMSTR71 19.2cm 7½"
CTN QTY 12



TRIANGLE BOWL
SNMSTRB91 23.5cm 9¼"
60cl 21oz
CTN QTY 12
SNMSTRB71 18.5cm 7¼"
37cl 13oz
CTN QTY 12



TRIANGLE BOWL
SNMSTRB61 15.3cm 6"
26cl 9oz
CTN QTY 12



OBLONG PLATE
SNMSOP141 35 x 18.5cm
14 x 7¼"
CTN QTY 6



OBLONG PLATE
SNMSOP111 29.5 x 15cm
11¾ x 6"
CTN QTY 12



DEEP SQUARE PLATE
SNMSDS101 26.8cm 10½"
CTN QTY 6



OVAL COUPE PLATE
SNMSOP71 19.2cm 7½"
CTN QTY 12



Cornflower Blue

Code: SCFS



COUPE PLATE
SCFSEV121 32.4cm 12 1/4"
CTN QTY 6



COUPE PLATE
SCFSEV111 28.8cm 11 1/4"
CTN QTY 12
SCFSEV101 26cm 10 1/4"
CTN QTY 12



COUPE PLATE
SCFSEVP81 21.7cm 8 5/8"
CTN QTY 12
SCFSEVP61 16.5cm 6 1/2"
CTN QTY 12



COUPE BOWL
SCFSPLC21 31cm 12"
240cl 84.5oz
CTN QTY 6



COUPE BOWL
SCFSEVB91 24.8cm 9 3/4"
113.6cl 40oz
CTN QTY 12
SCFSEVB71 18.2cm 7 1/4"
42.6cl 15oz
CTN QTY 12



WIDE RIM BOWL
SCFSVWBL1 28cm 11"
46.8cl 16.5oz
CTN QTY 12
SCFSVWBM1 24cm 9 1/2"
28.4cl 10oz
CTN QTY 12



TRIANGLE PLATE
SCFSTR121 31.1cm 12 1/4"
CTN QTY 6
SCFSTR101 26.5cm 10 1/2"
CTN QTY 12



TRIANGLE PLATE
SCFSTR91 22.9cm 9"
CTN QTY 12
SCFSTR71 19.2cm 7 1/2"
CTN QTY 12



TRIANGLE BOWL
SCFSTRB91 23.5cm 9 1/4"
60cl 21oz
CTN QTY 12
SCFSTRB71 18.5cm 7 1/2"
37cl 13oz
CTN QTY 12



TRIANGLE BOWL
SCFSTRB61 15.3cm 6"
26cl 9oz
CTN QTY 12



OBLONG PLATE
SCFSOP141 35 x 18.5cm
14 x 7 1/4"
CTN QTY 6
SCFSOP111 29.5 x 15cm
11 3/4 x 6"
CTN QTY 12



DEEP SQUARE PLATE
SCFSDS101 26.8cm 10 1/2"
CTN QTY 6



OVAL COUPE PLATE
SCFSOP71 19.2cm 7 3/4"
CTN QTY 12



ZEST BOWL
SCFSZE121 34cl 12oz
H: 6.5cm
Dia: 12.1cm
CTN QTY 12



SAUCE DISH
SCFSDD31 9cl 3oz
H: 4cm
Dia: 8cm
CTN QTY 12



CAPPUCCINO CUP
SCFSCB281 34cl 12oz
H: 6.5cm
Dia: 11cm
CTN QTY 12



CAPPUCCINO CUP
SCFSCB201 22.7cl 8oz
H: 5.5cm
Dia: 9.5cm
CTN QTY 12



SAUCER
SCFSCSS1 15.6cm 6 1/4"
CTN QTY 12
(Fits SCFSCB281 & SCFSCB201)



ESPRESSO CUP
SCFSCEB91 10cl 3.5oz
H: 5.5cm
Dia: 6.5cm
CTN QTY 12



ESPRESSO SAUCER
SCFSSESS1 11.8cm 4 1/2"
CTN QTY 12
(Fits SCFSCEB91)



MUG
SCFSVM121 34cl 12oz
H: 11cm
Dia: 8cm
CTN QTY 12



BEVERAGE POT
SCFSSB151 42.6cl 15oz
H: 10.5cm
CTN QTY 4
REPLACEMENT LID
SCFSRL151
CTN QTY 6



JUG
SCFSSJ41 11.4cl 4oz
H: 7cm
CTN QTY 4



SUGAR BOWL
SCFSSSGR1 22.7cl 8oz
H: 6.2cm
Dia: 9.8cm
CTN QTY 12



Spiced Orange

Code: SSOS



COUPE PLATE
SSOSEV121 32.4cm 12 1/4"
 CTN QTY 6
SSOSEV111 28.8cm 11 1/4"
 CTN QTY 12
SSOSEV101 26cm 10 1/4"
 CTN QTY 12



COUPE PLATE
SSOSEVP81 21.7cm 8 5/8"
 CTN QTY 12
SSOSEVP61 16.5cm 6 1/2"
 CTN QTY 12



COUPE BOWL
SSOSPLC21 31cm 12"
 240cl 84.5oz
 CTN QTY 6
SSOSEVB91 24.8cm 9 3/4"
 113.6cl 40oz
 CTN QTY 12
SSOSEVB71 18.2cm 7 1/4"
 42.6cl 15oz
 CTN QTY 12



WIDE RIM BOWL
SSOSVWB1 28cm 11"
 46.8cl 16.5oz
 CTN QTY 12
SSOSVWBM1 24cm 9 1/2"
 28.4cl 10oz
 CTN QTY 12



TRIANGLE PLATE
SSOSTR121 31.1cm 12 1/4"
 CTN QTY 6
SSOSTR101 26.5cm 10 1/2"
 CTN QTY 12



TRIANGLE PLATE
SSOSTR9 1 22.9cm 9"
 CTN QTY 12
SSOSTR7 1 19.2cm 7 3/4"
 CTN QTY 12



TRIANGLE BOWL
SSOSTRB91 23.5cm 9 1/4"
 60cl 21oz
 CTN QTY 12
SSOSTRB71 18.5cm 7 1/4"
 37cl 13oz
 CTN QTY 12
SSOSTRB61 15.3cm 6"
 26cl 9oz
 CTN QTY 12



OBLONG PLATE
SSOSOP141 35 x 18.5cm
 14 x 7 1/2"
 CTN QTY 6
SSOSOP111 29.5 x 15cm
 11 1/4 x 6"
 CTN QTY 12



DEEP SQUARE PLATE
SSOSDS101 26.8cm 10 1/2"
 CTN QTY 6



OVAL COUPE PLATE
SSOSOP7 1 19.2cm 7 1/2"
 CTN QTY 12



NOODLE BOWL
SSOSNDBL1 107.5cl 37.8oz
 H: 8cm
 Dia: 18.3cm
 CTN QTY 6



SOUP BOWL
SSOSRBL61 47cl 16oz
 H: 6.3cm
 Dia: 13.2cm
 CTN QTY 12



ZEST BOWL
SSOSZE121 34cl 12oz
 H: 6.5cm
 Dia: 12.1cm
 CTN QTY 12



RIPPLE CHIP MUG
SSOSRPCM1 28cl 10oz
 H: 9.5cm
 Dia: 8.3cm
 CTN QTY 12



RIPPLE DIP POT
SSOSRPD21 5.7cl 2oz
 H: 5cm
 Dia: 5.9cm
 CTN QTY 12



SAUCE DISH
SSOSSD3 1 9cl 3oz
 H: 4cm
 Dia: 8cm
 CTN QTY 12



CAPPUCCINO CUP
SSOSCB281 34cl 12oz
 H: 6.5cm
 Dia: 11cm
 CTN QTY 12
SSOSCB201 22.7cl 8oz
 H: 5.5cm
 Dia: 9.5cm
 CTN QTY 12



SAUCER
SSOSCSS 1 15.6cm 6 1/4"
 CTN QTY 12
 (Fits SSOSCB281 & SSOSCB201)



ESPRESSO CUP
SSOSCEB91 10cl 3.5oz
 H: 5.5cm
 Dia: 6.5cm
 CTN QTY 12



ESPRESSO SAUCER
SSOSSESS 1 11.8cm 4 1/2"
 CTN QTY 12
 (Fits SSOSCEB91)



MUG
SSOSVM121 34cl 12oz
 H: 11cm
 Dia: 8cm
 CTN QTY 12



BEVERAGE POT
SSOSSB151 42.6cl 15oz
 H: 10.5cm
 CTN QTY 4
REPLACEMENT LID
SSOSRL151
 CTN QTY 6



JUG
SSOSSJ4 1 11.4cl 4oz
 H: 7cm
 CTN QTY 4



SUGAR BOWL
SSOSSGR1 22.7cl 8oz
 H: 6.2cm
 Dia: 9.8cm
 CTN QTY 12



Mustard Seed Yellow

Code: SMSS



COUPE PLATE
SMSSEV121 32.4cm 12 3/4"
CTN QTY 6



COUPE PLATE
SMSSEV111 28.8cm 11 1/2"
CTN QTY 12
SMSSEV101 26cm 10 1/4"
CTN QTY 12



COUPE PLATE
SMSSEVP81 21.7cm 8 1/2"
CTN QTY 12



COUPE PLATE
SMSSEVP61 16.5cm 6 1/2"
CTN QTY 12



COUPE BOWL
SMSSPLC21 31cm 12"
240cl 84.5oz
CTN QTY 6



COUPE BOWL
SMSSEVB91 24.8cm 9 3/4"
113.6cl 40oz
CTN QTY 12
SMSSEVB71 18.2cm 7 1/4"
42.6cl 15oz
CTN QTY 12



WIDE RIM BOWL
SMSSVWBL1 28cm 11"
46.8cl 16.5oz
CTN QTY 12



WIDE RIM BOWL
SMSSVWBM1 24cm 9 1/2"
28.4cl 10oz
CTN QTY 12



TRIANGLE PLATE
SMSSTR121 31.1cm 12 1/4"
CTN QTY 6
SMSSTR101 26.5cm 10 1/2"
CTN QTY 12



TRIANGLE PLATE
SMSSTR91 22.9cm 9"
CTN QTY 12
SMSSTR71 19.2cm 7 1/4"
CTN QTY 12



TRIANGLE BOWL
SMSSTRB91 23.5cm 9 1/4"
60cl 21oz
CTN QTY 12



TRIANGLE BOWL
SMSSTRB71 18.5cm 7 1/4"
37cl 13oz
CTN QTY 12
SMSSTRB61 15.3cm 6"
26cl 9oz
CTN QTY 12



OBLONG PLATE
SMSSOP141 35 x 18.5cm
14 x 7 1/4"
CTN QTY 6



OBLONG PLATE
SMSSOP111 29.5 x 15cm
11 1/4 x 6"
CTN QTY 12



DEEP SQUARE PLATE
SMSSDS101 26.8cm 10 1/2"
CTN QTY 6



OVAL COUPE PLATE
SMSSOP71 19.2cm 7 1/2"
CTN QTY 12



Berry Red

Code: SBRS



COUPE PLATE
SBRSEV121 32.4cm 12 3/4"
CTN QTY 6



COUPE PLATE
SBRSEV111 28.8cm 11 1/2"
CTN QTY 12
SBRSEV101 26cm 10 1/4"
CTN QTY 12



COUPE PLATE
SBRSEVP81 21.7cm 8 5/8"
CTN QTY 12



COUPE PLATE
SBRSEVP61 16.5cm 6 1/2"
CTN QTY 12



COUPE BOWL
SBRSPLC21 31cm 12"
240cl 84.5oz
CTN QTY 6



COUPE BOWL
SBRSEVB91 24.8cm 9 3/4"
113.6cl 40oz
CTN QTY 12
SBRSEVB71 18.2cm 7 1/4"
42.6cl 15oz
CTN QTY 12



WIDE RIM BOWL
SBRVWBL1 28cm 11"
46.8cl 16.5oz
CTN QTY 12



WIDE RIM BOWL
SBRVWBM1 24cm 9 1/2"
28.4cl 10oz
CTN QTY 12



TRIANGLE PLATE
SBRSTR121 31.1cm 12 1/4"
CTN QTY 6
SBRSTR101 26.5cm 10 1/2"
CTN QTY 12



TRIANGLE PLATE
SBRSTR91 22.9cm 9"
CTN QTY 12
SBRSTR71 19.2cm 7 3/4"
CTN QTY 12



TRIANGLE BOWL
SBRSTRB91 23.5cm 9 1/4"
60cl 21oz
CTN QTY 12



TRIANGLE BOWL
SBRSTRB71 18.5cm 7 1/4"
37cl 13oz
CTN QTY 12
SBRSTRB61 15.3cm 6"
26cl 9oz
CTN QTY 12



OBLONG PLATE
SBR SOP141 35 x 18.5cm
14 x 7 1/4"
CTN QTY 6



OBLONG PLATE
SBR SOP111 29.5 x 15cm
11 1/4 x 6"
CTN QTY 12



DEEP SQUARE PLATE
SBRSDS101 26.8cm 10 1/2"
CTN QTY 6



OVAL COUPE PLATE
SBR SOP71 19.2cm 7 3/4"
CTN QTY 12

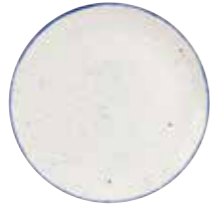


Hints Indigo Blue

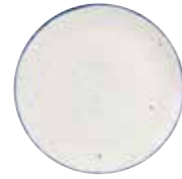
Code: SHBI



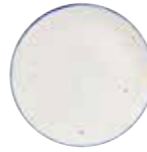
COUPE PLATE
SHBIEV121 32.4cm 12 3/4"
CTN QTY 6



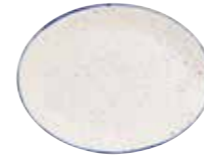
COUPE PLATE
SHBIEV111 28.8cm 11 1/2"
CTN QTY 12
SHBIEV101 26cm 10 1/4"
CTN QTY 12



COUPE PLATE
SHBIEVP81 21.7cm 8 1/2"
CTN QTY 12



COUPE PLATE
SHBIEVP61 16.5cm 6 1/2"
CTN QTY 12



OVAL COUPE PLATE
SHBID121 30.5cm 12"
CTN QTY 12
SHBID101 25.4cm 10"
CTN QTY 12



COUPE BOWL
SHBIEVB91 24.8cm 9 3/4"
113.6cl 40oz
CTN QTY 12
SHBIEVB71 18.2cm 7 1/4"
42.6cl 15oz
CTN QTY 12



TRIANGLE PLATE
SHBITR121 31.1cm 12 1/4"
CTN QTY 6
SHBITR101 26.5cm 10 1/2"
CTN QTY 12



TRIANGLE PLATE
SHBITR91 22.9cm 9"
CTN QTY 12



TRIANGLE BOWL
SHBITRB91 23.5cm 9 1/4"
60cl 21oz
CTN QTY 12



TRIANGLE BOWL
SHBITRB61 15.3cm 6"
26cl 9oz
CTN QTY 12



CHEFS' OBLONG PLATTER No.9
SHBIXP141 35.5 x 24.5cm
13 3/8 x 9 5/8"
CTN QTY 6



CHEFS' OBLONG PLATE No.4
SHBIXO141 35.5 x 18.9cm
13 3/8 x 7 3/8"
CTN QTY 6

CHEFS' OBLONG PLATE No.3
SHBIXO111 29.8 x 15.3cm
11 3/4 x 6"
CTN QTY 12



Hints Buffet



COUPE BOWL
SHBIAC141 38.5 x 8.8cm
15 1/4 x 3 1/2"
500cl 175oz
CTN QTY 4



RECTANGULAR BAKING DISH
SHBIXLBD1 53 x 32.5 x 6.2cm
21 x 13 x 2 1/2"
6ltr 211.8oz
CTN QTY 2



RECTANGULAR BAKING DISH
SHBIRLBD1 38 x 25 x 6.2cm
15 x 10 x 2 1/2"
3.5ltr 123.2oz
CTN QTY 4



SQUARE BAKING DISH
SHBISBD1 25 x 25 x 6.2cm
10 x 10 x 2 1/2"
2ltr 70.4oz
CTN QTY 6



RECTANGULAR BAKING DISH
SHBILBD1 53 x 16 x 6.2cm
21 x 6 1/2 x 2 1/2"
3ltr 105.6oz
CTN QTY 2



SMALL CASSEROLE DISH
SHBIRCD1 18 x 19.4 x 11.5cm
7 x 6 1/2 x 4 1/2"
2ltr 70.4oz
CTN QTY 4



2/4 FLAT TRAY
SHBISLBD1 53 x 15 x 2.5cm
21 x 6 x 1"
1.4ltr 50oz
CTN QTY 4



RECTANGULAR BUFFET TRAY
SHBIART1 30 x 14.5cm
11 3/4 x 5 3/4"
CTN QTY 6



SQUARE BUFFET TRAY
SHBIAST1 30.3 x 30.3cm
11 3/8 x 11 3/8"
CTN QTY 4

Covered by Churchill 5 Year Edge Chip Warranty

Aqueous | Bayou

Code: SABT

NEW ADDITIONS



COUPE PLATE
SABTEV111 28.8cm 11¼"
CTN QTY 12



COUPE PLATE
SABTEV101 26cm 10¼"
CTN QTY 12



COUPE PLATE
SABTEVP81 21.7cm 8½"
CTN QTY 12



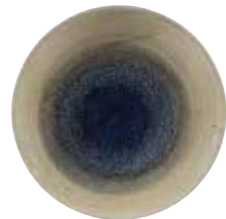
COUPE PLATE
SABTEVP61 16.5cm 6½"
CTN QTY 12



DEEP COUPE PLATE
SABTPD271 28.1cm 11"
H: 3.7cm
CTN QTY 12



DEEP COUPE PLATE
SABTPD251 25.5cm 10"
H: 3.5cm
CTN QTY 12



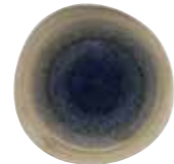
DEEP COUPE PLATE
SABTPD221 22.5cm 8¾"
H: 2.7cm
CTN QTY 12



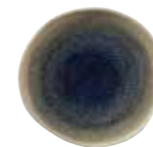
ORGANIC ROUND PLATE
SABTOG111 28.6cm 11¼"
CTN QTY 12



ORGANIC ROUND PLATE
SABTOG101 26.4cm 10½"
CTN QTY 12



ORGANIC ROUND PLATE
SABTOG81 21cm 8¼"
CTN QTY 12



ORGANIC ROUND PLATE
SABTOG71 18.6cm 7¼"
CTN QTY 12



ORGANIC ROUND BOWL
SABTOGB11 25.3cm 9¾"
110cl 38oz
CTN QTY 12



TRIANGLE PLATE
SABTR121 31.1cm 12¼"
CTN QTY 6



TRIANGLE PLATE
SABTR101 26.5cm 10½"
CTN QTY 12



TRIANGLE PLATE
SABTR91 22.9cm 9"
CTN QTY 12



TRIANGLE PLATE
SABTR71 19.2cm 7¾"
CTN QTY 12



TRIANGLE BOWL
SBRSTRB91 23.5cm 9¼"
60cl 21oz
CTN QTY 12



TRIANGLE BOWL
SBRSTRB71 18.5cm 7¼"
37cl 13oz
CTN QTY 12



Patina | Cobalt Blue

Code: PABL

NEW COLOUR



COUPE PLATE
PABLEV111 28.8cm 11½"
CTN QTY 12



COUPE PLATE
PABLEV101 26cm 10¼"
CTN QTY 12



COUPE PLATE
PABLEVP81 21.7cm 8½"
CTN QTY 12



COUPE PLATE
PABLEVP61 16.5cm 6½"
CTN QTY 12



COUPE BOWL
PABLEVB91 24.8cm 9¾"
113.6cl 40oz
CTN QTY 12



TRIANGLE PLATE
PABLTR9 1 22.9cm 9"
CTN QTY 12



TRIANGLE BOWL
PABLTRB91 23.5cm 9¼"
60cl 21oz
CTN QTY 12



TRIANGLE BOWL
PABLTRB61 15.3cm 6"
26cl 9oz
CTN QTY 12



CHEFS' OBLONG PLATE No.4
PABLXO141 35.5 x 18.9cm
13¾ x 7¾"
CTN QTY 6



CHEFS' OBLONG PLATE No.3
PABLXO111 29.8 x 15.3cm
11¾ x 6"
CTN QTY 12



Covered by Churchill 5 Year Edge Chip Warranty

Patina | Rustic Teal

Code: PATR



COUPE PLATE
PATREV111 28.8cm 11¼"
CTN QTY 12



COUPE PLATE
PATREV101 26cm 10¼"
CTN QTY 12



COUPE PLATE
PATREVP81 21.7cm 8½"
CTN QTY 12



COUPE PLATE
PATREVP61 16.5cm 6½"
CTN QTY 12



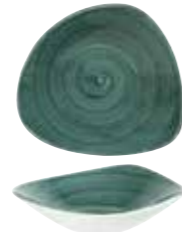
COUPE BOWL
PATREVB91 24.8cm 9¾"
113.6cl 40oz
CTN QTY 12



TRIANGLE PLATE
PATRTR9 1 22.9cm 9"
CTN QTY 12



TRIANGLE BOWL
PATRTRB91 23.5cm 9¼"
60cl 21oz
CTN QTY 12



TRIANGLE BOWL
PATRTRB61 15.3cm 6"
26cl 9oz
CTN QTY 12



CHEFS' OBLONG PLATE No.4
PATRXO141 35.5 x 18.9cm
13¾ x 7¾"
CTN QTY 6



CHEFS' OBLONG PLATE No.3
PATRXO111 29.8 x 15.3cm
11¾ x 6"
CTN QTY 12



Patina | Burnished Green

Code: PABG



COUPE PLATE
PABGEV121 32.4cm 12¾"
CTN QTY 6



COUPE PLATE
PABGEV111 28.8cm 11¼"
CTN QTY 12
PABGEV101 26cm 10¼"
CTN QTY 12



COUPE PLATE
PABGEVP81 21.7cm 8½"
CTN QTY 12



COUPE PLATE
PABGEVP61 16.5cm 6½"
CTN QTY 12



COUPE BOWL
PABGEVB91 24.8cm 9¾"
113.6cl 40oz
CTN QTY 12



COUPE BOWL
PABGEVB71 18.2cm 7¼"
42.6cl 15oz
CTN QTY 12



ORGANIC ROUND PLATE
PABGOG111 28.6cm 11¼"
CTN QTY 12



ORGANIC ROUND PLATE
PABGOG101 26.4cm 10½"
CTN QTY 12



ORGANIC ROUND PLATE
PABGOG81 21cm 8¼"
CTN QTY 12



ORGANIC ROUND PLATE
PABGOG71 18.6cm 7¼"
CTN QTY 12



ORGANIC ROUND BOWL
PABGOGB11 25.3cm 9¾"
110cl 38oz
CTN QTY 12



WIDE RIM BOWL
PABGVWBL1 28cm 11"
46.8cl 16.5oz
CTN QTY 12



TRIANGLE PLATE
PABGTR121 31.1cm 12¼"
CTN QTY 6



TRIANGLE PLATE
PABGTR91 22.9cm 9"
CTN QTY 12



TRIANGLE PLATE
PABGTR71 19.2cm 7½"
CTN QTY 12



TRIANGLE BOWL
PABGTRB91 23.5cm 9¼"
60cl 21oz
CTN QTY 12



TRIANGLE BOWL
PABGTRB61 15.3cm 6"
26cl 9oz
CTN QTY 12



CHEFS' OBLONG PLATE No.4
PABGXO141 35.5 x 18.9cm
13½ x 7½"
CTN QTY 6

CHEFS' OBLONG PLATE No.3
PABGXO111 29.8 x 15.3cm
11½ x 6"
CTN QTY 12



Patina | Antique Taupe

Code: PAAT



COUPE PLATE
PAATEV121 32.4cm 12 3/4"
 CTN QTY 6



COUPE PLATE
PAATEV111 28.8cm 11 1/4"
 CTN QTY 12
PAATEV101 26cm 10 1/4"
 CTN QTY 12



COUPE PLATE
PAATEVP81 21.7cm 8 5/8"
 CTN QTY 12



COUPE PLATE
PAATEVP61 16.5cm 6 1/2"
 CTN QTY 12



COUPE BOWL
PAATEVB91 24.8cm 9 3/4"
 113.6cl 40oz
 CTN QTY 12



COUPE BOWL
PAATEVB71 18.2cm 7 1/4"
 42.6cl 15oz
 CTN QTY 12



ORGANIC ROUND PLATE
PAATOG111 28.6cm 11 1/4"
 CTN QTY 12



ORGANIC ROUND PLATE
PAATOG101 26.4cm 10 3/8"
 CTN QTY 12



ORGANIC ROUND PLATE
PAATOG81 21cm 8 1/4"
 CTN QTY 12



ORGANIC ROUND PLATE
PAATOG71 18.6cm 7 1/2"
 CTN QTY 12



ORGANIC ROUND BOWL
PAATOGB11 25.3cm 9 3/4"
 110cl 38oz
 CTN QTY 12



WIDE RIM BOWL
PAATVWBL1 28cm 11"
 46.8cl 16.5oz
 CTN QTY 12



TRIANGLE PLATE
PAATR121 31.1cm 12 1/4"
 CTN QTY 6



TRIANGLE PLATE
PAATR91 22.9cm 9"
 CTN QTY 12



TRIANGLE PLATE
PAATR71 19.2cm 7 1/2"
 CTN QTY 12



TRIANGLE BOWL
PAATRB91 23.5cm 9 1/4"
 60cl 21oz
 CTN QTY 12



TRIANGLE BOWL
PAATRB61 15.3cm 6"
 26cl 9oz
 CTN QTY 12



CHEFS' OBLONG PLATE No.4
PAATXO141 35.5 x 18.9cm
 13 1/2 x 7 3/8"
 CTN QTY 6
 CHEFS' OBLONG PLATE No.3
PAATXO111 29.8 x 15.3cm
 11 3/4 x 6"
 CTN QTY 12



Covered by Churchill 5 Year Edge Chip Warranty

Patina | Iron Black

Code: PAIB



COUPE PLATE
PAIBEV121 32.4cm 12 3/4"
CTN QTY 6



COUPE PLATE
PAIBEV111 28.8cm 11 1/4"
CTN QTY 12
PAIBEV101 26cm 10 1/4"
CTN QTY 12



COUPE PLATE
PAIBEVP81 21.7cm 8 5/8"
CTN QTY 12



COUPE PLATE
PAIBEVP61 16.5cm 6 1/2"
CTN QTY 12



COUPE BOWL
PAIBEB91 24.8cm 9 3/4"
113.6cl 40oz
CTN QTY 12



COUPE BOWL
PAIBEB71 18.2cm 7 1/4"
42.6cl 15oz
CTN QTY 12



ORGANIC ROUND PLATE
PAIBOG111 28.6cm 11 1/4"
CTN QTY 12



ORGANIC ROUND PLATE
PAIBOG101 26.4cm 10 3/8"
CTN QTY 12



ORGANIC ROUND PLATE
PAIBOG81 21cm 8 1/4"
CTN QTY 12



ORGANIC ROUND PLATE
PAIBOG71 18.6cm 7 1/4"
CTN QTY 12



ORGANIC ROUND BOWL
PAIBOGB11 25.3cm 9 7/8"
110cl 38oz
CTN QTY 12



WIDE RIM BOWL
PAIBVWBL1 28cm 11"
46.8cl 16.5oz
CTN QTY 12



TRIANGLE PLATE
PAIBTR121 31.1cm 12 1/4"
CTN QTY 6



TRIANGLE PLATE
PAIBTR91 22.9cm 9"
CTN QTY 12



TRIANGLE PLATE
PAIBTR71 19.2cm 7 1/2"
CTN QTY 12



TRIANGLE BOWL
PAIBTRB91 23.5cm 9 1/4"
60cl 21oz
CTN QTY 12



TRIANGLE BOWL
PAIBTRB61 15.3cm 6"
26cl 9oz
CTN QTY 12



CHEFS' OBLONG PLATE No.4
PAIBXO141 35.5 x 18.9cm
13 3/4 x 7 3/8"
CTN QTY 6
CHEFS' OBLONG PLATE No.3
PAIBXO111 29.8 x 15.3cm
11 3/4 x 6"
CTN QTY 12



Covered by Churchill 5 Year Edge Chip Warranty

Patina | Vintage Copper

Code: PAVC



COUPE PLATE
PAVCEV121 32.4cm 12¾"
CTN QTY 6



COUPE PLATE
PAVCEV111 28.8cm 11¼"
CTN QTY 12



COUPE PLATE
PAVCEV101 26cm 10¼"
CTN QTY 12



COUPE PLATE
PAVCEVP81 21.7cm 8½"
CTN QTY 12



COUPE PLATE
PAVCEVP61 16.5cm 6½"
CTN QTY 12



COUPE BOWL
PAVCEVB91 24.8cm 9¾"
113.6cl 40oz
CTN QTY 12



COUPE BOWL
PAVCEVB71 18.2cm 7¼"
42.6cl 15oz
CTN QTY 12



WIDE RIM BOWL
PAVCVW81 28cm 11"
46.8cl 16.5oz
CTN QTY 12



ORGANIC ROUND BOWL
PAVCOGB11 25.3cm 9¾"
110cl 38oz
CTN QTY 12



ORGANIC ROUND PLATE
PAVCOG111 28.6cm 11¼"
CTN QTY 12



ORGANIC ROUND PLATE
PAVCOG101 26.4cm 10½"
CTN QTY 12



ORGANIC ROUND PLATE
PAVCOG81 21cm 8¼"
CTN QTY 12



ORGANIC ROUND PLATE
PAVCOG71 18.6cm 7½"
CTN QTY 12



TRIANGLE PLATE
PAVCTR121 31.1cm 12¼"
CTN QTY 6



TRIANGLE PLATE
PAVCTR91 22.9cm 9"
CTN QTY 12



TRIANGLE PLATE
PAVCTR71 19.2cm 7½"
CTN QTY 12



TRIANGLE BOWL
PAVCTRB91 23.5cm 9¼"
60cl 21oz
CTN QTY 12



TRIANGLE BOWL
PAVCTRB61 15.3cm 6"
26cl 9oz
CTN QTY 12



CHEFS' OBLONG PLATE No.4
PAVCXO141 35.5 x 18.9cm
13¾ x 7¾"
CTN QTY 6



CHEFS' OBLONG PLATE No.3
PAVCXO111 29.8 x 15.3cm
11¾ x 6"
CTN QTY 12





FEATURES & BENEFITS

Super Vitrified Body

Super Vitrified is a vitreous body that does not absorb moisture, is more hygienic and has better heat retention properties. Its high resistance to thermal shock helps to reduce breakages. Its properties provide superior strength.

Superior Glaze Finish

Protected by ecoglaze, a high performance glaze that enhances product performance, prolonging the life of the product, improving stain and metal mark resistance and durability. Excellent stability prevents thermal shock and crazing.

Underglaze Decoration

The design is hand decorated under glaze, this creates a protective layer to add lasting durability and improve performance during service use.

Hand Decorated

Stonecast items are decorated individually by hand, creating unique pieces that add to the overall rustic charm.

Fully Glazed Base on all Flatware

Prevents damage when stacking.

5 Year Edge Chip Warranty

Covered by our 5 Year Edge Chip Warranty.

• Denotes items covered by the warranty

Bespoke Stonecast Backstamp

Dishwasher & Microwave Safe





CHURCHILL[®]

churchill1795.com

[@churchill1795](https://twitter.com/churchill1795)

[f churchill1795](https://www.facebook.com/churchill1795)

[@churchill_1795](https://www.instagram.com/churchill_1795)

Tel: +44 (0) 1782 577 566

Fax: +44 (0) 1782 524 355

email: info@churchill1795.com

HEAD OFFICE & STOKE SHOWROOM

No. 1 Marlborough Way
Tunstall
Stoke-on-Trent
ST6 5NZ

LONDON SHOWROOM

Business Design Centre
Suite 102
52 Upper Street
Islington
London
N1 0QH

MADRID SHOWROOM

Calle Princesa No 2
7ta Planta
Puertas 4 y 5
Madrid 28008
España
Tel: 910 004 929

In the printing of this brochure, every effort has been made to ensure perfect reproduction of product colours, but due to printing limitations, they may not be an exact match to the actual product.



Visit our YouTube channel **Churchill1795** to watch our official Stonecast video.

